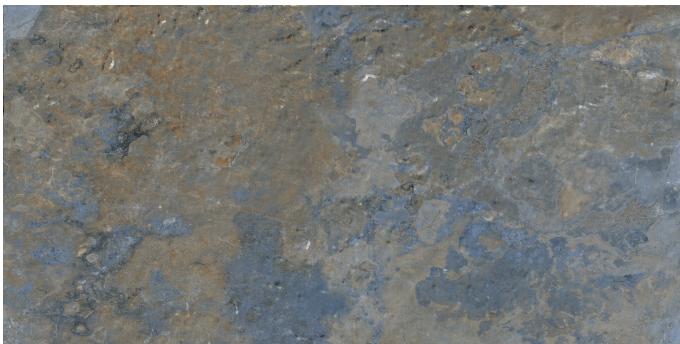


Series **Sinai**



Sinai Blue Mate 60x120 Rc 20mm

60x120 20MM



Technical Data



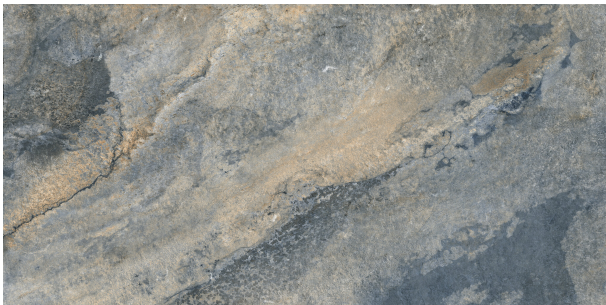
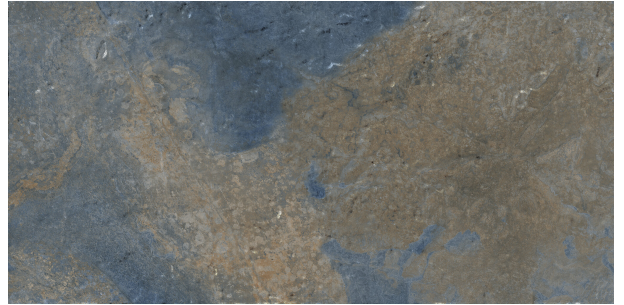
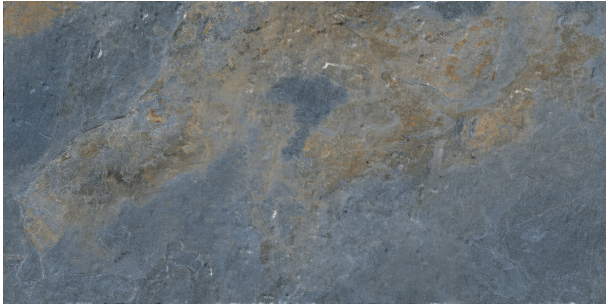
Series: SINAI
 Product: Sinai Blue Mate 60x120 Rc 20mm
 Size: 60x120 20MM
 Sales group G.5085
 Type: Porcelain tiles

Type of material Neutral Body
 Slippiness R: R11C
 Class: Antislip
 UPEC:
 Finish: MATT

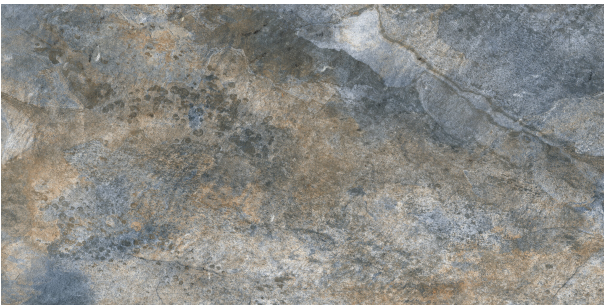
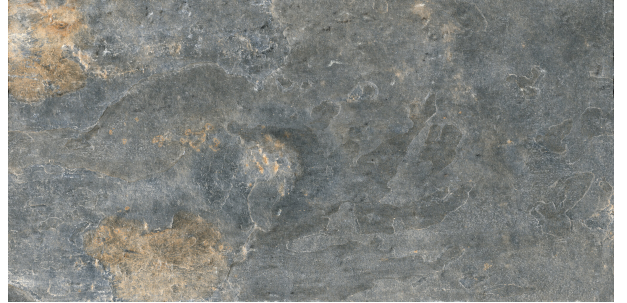
| Size | Product type | Pcs/Box | M2/Box | Kg/Box | Boxes/Pallet | M2/Pallet | Kg/Pallet |
|-------------|--------------|---------|--------|--------|--------------|-----------|-----------|
| 60x120 20MM | Field Tile | 1 | 0,720 | 34,375 | 32,000 | 23,040 | 1100,000 |

Please note: the contents of this packaging list are for guidance only, the contents of the packaging may vary. Please consult our sales staff for the exact list.

Variations

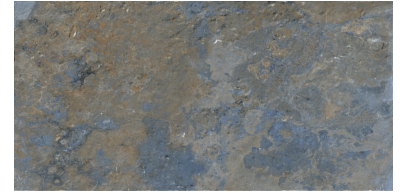


Variations



Technical Data

Sinai Blue Mate 60x120 Rc 20mm



| | |
|------------------|-----------------------------|
| Family: | Porcelain tiles MATT |
| Absortion Group: | Bla |
| Size: | 60x120 20MM |
| Worz Size (mm): | 1200 x 600 x 20 |

PHYSICAL CHARACTERISTICS

| CHARACTERISTICS | STANDARD | VALUE |
|---|---------------------------|---------------------------|
| Dimensional tolerances and surface appearance | UNE-EN-ISO 10545-2 | Complies with the standar |
| Water Absortion | UNE-EN-ISO 10545-3 | E<0,5% |
| Breaking strenght (N) | UNE-EN-ISO 10545-4 | >1300 |
| Flexural tensile strengthn (N/mm2) | UNE-EN-ISO 10545-4 | >=35 |
| Resistance to abrasion (PEI) | UNE-EN-ISO 10545-7 | 3 |
| Thermal shock resistance | UNE-EN-ISO 10545-9 | Complies with the standar |
| Cracking resistance | UNE-EN-ISO 10545-11 | Complies with the standar |
| Frost resistance | UNE-EN-ISO 10545-12 | Complies with the standar |
| Scratch hardness according to Mohs | UNE-EN-ISO 67101 | 7 |
| Slipperness resistance Pendulum | UNE-EN 16165:2022 anexo C | Clase 3 |
| Slipperness resistance Inclined platform | UNE-EN 16165:2022 anexo B | R11 |
| Slipperness resistance Barefoot areas | UNE-EN 16165:2022 anexo A | C |
| Reaction to fire | UNE-EN-ISO 13501-1 | A1 - A1 FL |
| DCOF | DCOF | >0,60 |

CHEMICAL CHARACTERISTICS

| CHARACTERISTICS | STANDARD | VALUE |
|--|---------------------|----------------------------|
| Resistance to staining | UNE-EN-ISO 10545-14 | Complies with the standars |
| Resistrance to chemicals and pool treatment products | UNE-EN-ISO 10545-13 | Complies with the standars |
| Resistance to High concentration acids and bases | UNE-EN-ISO 10545-13 | MIN HB |
| Resistance to Low concentration acids and bases | UNE-EN-ISO 10545-13 | MIN LB |